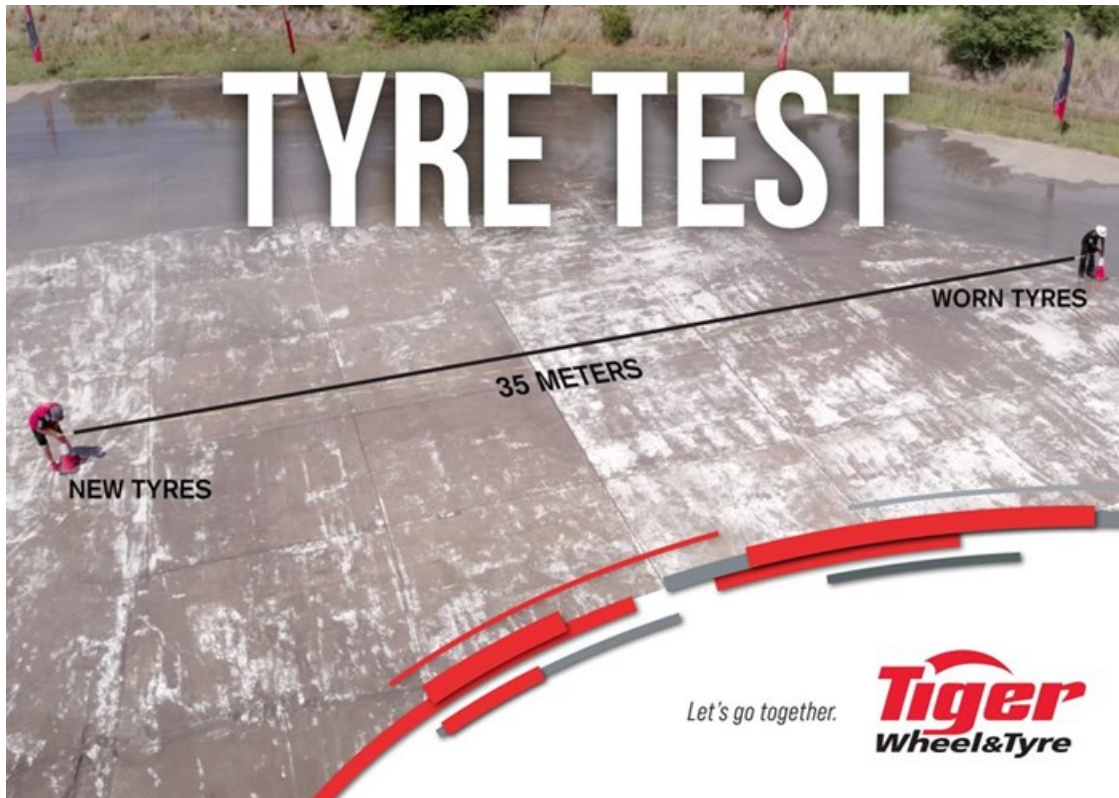


# Tiger Wheel & Tyre's testing of worn versus new tyres yields sobering results

Issued by [Tiger Wheel & Tyre](#)

18 Apr 2024

Tiger Wheel & Tyre has released the results of four key tyre tests conducted by the company at the Gerotek testing facility in Pretoria, in March this year. Using identical VW Polos, one fitted with new and the other with worn 15" tyres, professional drivers put the tyres through their paces. Advanced driving instructor Daniel Barbosa and race driver Paige Lindenberg were shocked by the results.



“Too often we see people pushing their tyres to and beyond the legal limit. We know this is dangerous, but we wanted to put that theory to the test under typical road conditions,” explained Chris Farrar, managing executive at Tiger Wheel & Tyre. “So, we set out to compare new tyres with 7mm of tread to worn tyres with 2.1mm, which is well within the legal limit of 1mm, and took the cars through a series of tests simulating real-world driving conditions.”

**Test One – Straight Line Wet Braking:** This test revealed a 10m increase in the worn tyres’ straight line stopping distance at a speed of 60km/h, compared to the new tyres, while that distance increased to as much as 35m at 100km/h.

**Test Two – Sweeping Right Turn:** The test, which simulates taking a highway offramp in the wet, tested the tyres’ impact on their vehicle’s steering capabilities in a bend at 50km/h. The new tyres adhered well to the road and comfortably made the bend, whereas the vehicle with worn tyres not only struggled to attain the testing speed but also suffered understeer.

**Test Three – Emergency Lane Change:** This test simulated avoiding a collision on a wet road at a speed of 40km/h, without braking. The new tyres effortlessly managed a controlled lane change without hitting any cones, while the worn tyres proved incapable of making the lane change and succumbed to understeer and hit the cones, which would mean a collision in real-world circumstances.

**Test Four – Slalom:** The final test aimed to test steering input and traction in the wet at a slow 40km/h pace on a slalom

course. The new tyres demonstrated outstanding grip and performance, clearing the cones with ease. The worn tyres on the other hand, made it past the first cone but couldn't clear the remainder, as the worn tread proved incapable of evacuating water and maintaining contact with the road.

"The test results were very sobering, and prove that a healthy tread depth is critical to vehicle performance and safety, and that the minimum legal tread depth of 1mm is no guarantee of either. What was also telling, is how shocked Paige and Daniel were by the differences in the new versus worn tyres. These are professionals whose daily work relies on good tyre performance. I think the key takeaway here is to never push your tyres to the limit of their lifespan," concluded Farrar.

Each tyre has a tread wear indicator (TWI) that indicates when the tread depth is at approximately 1.6mm. The TWI is a series of ridges inside the tyre grooves and is aligned with a triangle on the sidewall for ease of location. If your tread is at or below the TWI, then it's entirely likely that your tyres will not perform as well as less worn tyres tested by professional drivers. For help checking your tread depth, visit your nearest Tiger Wheel & Tyre today.

You can also view the tests on YouTube at <https://www.youtube.com/@tigerwheelandyre> or follow Tiger Wheel & Tyre on social media.

- **Tiger Wheel & Tyre's testing of worn versus new tyres yields sobering results** 18 Apr 2024
- **Tiger Wheel & Tyre takes ownership of the brand's 2 Gaborone stores** 8 Dec 2023
- **South Africans vote Tiger Wheel & Tyre tops in 11 different awards this year** 7 Dec 2023
- **Prepare for holiday road trips with some fast and some fun facts from Tiger Wheel & Tyre** 6 Dec 2023
- **Premium tyres triumph over budget tyres under rigorous test conditions** 1 Nov 2023

#### [Tiger Wheel & Tyre](#)



At Tiger Wheel & Tyre, we make auto-fitment our business! We care about your safety and that's why we offer only the best in quality brands, matched with expert advice and service excellence that's honest, convenient and affordable.

[Profile](#) | [News](#) | [Contact](#) | [Twitter](#) | [Facebook](#) | [RSS Feed](#)

For more, visit: <https://www.bizcommunity.com>